

# STORIES FROM THE FIELD

CRA Charitable Registration N° 800640062 RR001



**KUWALA**  
Christian Girls School



■ ISSUE 03 | MARCH | 23\_009

**LEARNING ENGLISH IS ESSENTIAL** | 02

**FORM THEMES FOR THE YEAR** | 05

**INTERNATIONAL WOMEN'S + POETRY DAY** | 06

**TEACHER + STUDENT PROFILES** | 12

# LEARNING ENGLISH IS ESSENTIAL.

**The Malawi Education Act of 2013 stated that instruction in all public schools and colleges should be English.**

**English is considered the official language of Malawi while Chichewa is the national language.**

When the girls arrive at Kuwala, their English is limited, but they quickly learn through guidance, teaching, and daily encouragement of oral and written practice.

The girls at Kuwala arrive at the Campus, from their primary schools, with varying levels of education; some with more English knowledge than others, some with better study habits, but all with a sincere and determined commitment to achieve a secondary education. There is a lot of curriculum material to cover and study practices to develop. For many students, this is a challenge, as they are still learning and applying everything in the English language. The teachers at Kuwala developed a program to make learning memorable. Kuwala Quiz Day marks the first event designed with quiz material in a memory and oral format.

The teachers at Kuwala are determined to provide the best platform for these learners to succeed. One way they accomplish this is through a fitness test exam called mock examinations which reflect the nature of the National Examinations. Teachers have set this examination from almost ten secondary education institutions in Lilongwe's rural west, of which nine are public, and Kuwala is the only...





## TEACHING POWER

**Teaching and learning is in constant motion at the Kuwala Campus.**

non-state-owned school. As the Form 2 mock examination is in progress, the Form 1 and 3 girls are sitting for the end of Term 2 examinations. After mid-terms, there is an evaluation day where parents come for visiting day. The teachers and students review and discuss what their daughters have achieved and what the students need to focus on as they move forward in their day-to-day work.

# GETTING IT DONE.

**STUDYING FOR THE NATIONAL EXAMS BEFORE THE BREAK IN APRIL.**

**The Malawi Education Act of 2013 stated that instruction in all public schools and colleges should be English.**

**English is considered the official language of Malawi while Chichewa is the national language.**



■ Local barbers connecting up to battery power. Kuwala\_2023.

After the mid-terms in February, the students enjoyed a movie on the big screen in the St Peter's Assembly Hall. They also enjoy knitting and reading. Before going home for break, the girls get a haircut from a local barber. He arrives with his tools and solar power panels to run the equipment. All the girls welcome a fresh haircut! The students in Malawi break for a holiday on March 31. They will return to school to begin Term 3 on April 19.

# WHAT GETS WRITTEN GETS DONE!

THE STUDENTS WERE ENCOURAGED TO DEVELOP A WORKING THEME FOR THEIR SCHOOL YEAR, TO KEEP THEMSELVES MOTIVATED, ACCOUNTABLE, AND ENGAGED.

TO SUPPORT ONE ANOTHER THE CANADIAN BOARD WORKED WITH NOEL— ACTING HEADMASTER— TO HELP GUIDE THE GIRLS TO THEIR ACTION THEMES.

01

## Form 1 – “Together Towards a Bright Future”

Rationale: There is a significant knowledge gap from Standard 8 grade to Form 1 at Kuwala. Form 1 students have committed to working together in this new environment, building each other up, and helping and motivating each other to achieve a better, brighter future.

02

## Form 2 – “Expect the Best”

Rationale: Although they had a successful exam pass rate in the first National Exam, they have committed to improving their grades and expect only the best from each other, and their cohort.

03

## Form 3 – “Excellence is the Target”

Rationale: These students are striving for an “A grade” performance. They will try their best to achieve excellence in their studies and support each other.

04

## Form 4 – “Focus on Success”

Rationale: These girls follow in the footsteps of the Pioneer Students, the girls of the first Graduation Class at Kuwala. They know success comes from 20% input from teachers and 80% from students. They have to try their best despite all the negatives. Success comes from focus and hard work.





# INTERNATIONAL WOMEN'S DAY.

**LET'S EMBRACE EQUITY AND  
GIVE GIRLS THE POWER OF  
EDUCATION.**

**8-MAR-2023**

**International Women's Day 2023 is a day to celebrate women's strides toward equality and reflect on the progress that still needs to be made. Here in Malawi, Africa, we have come a long way, but we still have a lot of work to do.**

■ *The campus provides equal work opportunities for local women throughout the year. Kuwala\_2023.*

One of the biggest obstacles women and girls in Malawi face is access to education. Many families with limited funds choose to send their sons to school instead of their daughters, leaving many girls without the opportunity to learn and grow. But this is a mistake. Girls have just as much potential as boys and should be given the same educational experiences.

It's time for us to embrace equality and ensure every girl in Malawi can access education. We must break down the barriers holding them back and ensure they have the same opportunities as their male counterparts. Education is the key to unlocking a brighter future, not just for the individual girl but for her family, community, and country.

We cannot afford to let gender inequality hold us back any longer. Instead, we must invest in our girls and give them the tools they need to succeed. Educated girls are more likely to marry later in life, have healthier families, and contribute to economic growth in their communities. This is not just a matter of fairness; it's a matter of common sense. We cannot afford to leave half of our population behind. It's time to recognize the potential of our girls and give them a chance to shine.

So let's celebrate International Women's Day 2023 by committing to embrace equality in Malawi. Let's work together to ensure every girl has access to education and the chance to reach her full potential. Let's break down the barriers holding us back and build a brighter future for all of us.

Together, we can create a world where every girl has the chance to learn, grow, and succeed. Let's make International Women's Day 2023 a day to remember and a turning point in the fight for gender equality in Malawi and worldwide. Changing the narrative around girls education is why Kuwala exists for these girls. It's not a hand-out but a hand-up.

■ *As part of teaching the students what is happening globally, the female staff, led by Miss Grace Chazeza, organized women's prayers on March 9 in St. Peter's Assembly Hall to commemorate International Women's Day.*



# **WORLD POETRY DAY MARCH 21<sup>ST</sup>**

**UNLEASH THE BEAUTY OF  
WORDS; DISCOVER THE  
SIGNIFICANCE.**

**8-MAR-2023**

Let us celebrate World Poetry Day and the practicality of learning English in every way. One of the goals or themes of World Poetry Day is to bring attention to the importance of poetry in the conservation of old languages, in human growth in general, and in bringing about global awareness.

On World Poetry Day, we celebrate the beauty of language and the power of words to inspire, move, and engage. For girls in Malawi, mastering English is a key to unlocking a world of opportunity. Students can hone their language skills through poetry and learn to express themselves with grace and thrill. Poetry is a practical tool that shows mastery of English, a language that can take them to any destiny. As they learn to write verse, they develop a keen ear for the nuances of English, and the rhythm they hold dear. They discover how to use adjectives, metaphors, rhymes, paint pictures with words, and express emotions in chime. And, as they share their poetry with others, they gain confidence in their abilities as their pen glides across the page. They see the power of their spoken word, the strength of their pen, and the knowledge they can make an impact.





## POETRY IS POWER IN WRITING

---

**Through poetry, girls in Malawi shine.**

---

Through learning poetry, students sharpen their grasp of English language's nuances and rhythms. The imagery and metaphors in poetry can also aid you in understanding complex concepts and expressing ideas more vividly. Additionally, poetry encourages close reading and analysis, which are valuable skills in any language and aid in comprehending exam instructions and responses.

**WRITTEN BY NAOMI: FORM 2 STUDENT**

## **WE ARE DIAMONDS AND STARS**

**Today is the day to make a good decision.** Because of students' and teachers' cooperation, students have ambitions. Big like mansions. To make students know how to deal with situations.

A day of mindset change. To know where we were wrong. And change our thinking capacity. The day that will make us develop a hardworking spirit. Parents and teachers are on our side and motivate us to work hard. They are making us know that we can be somebody.

On evaluation day, we chat with our parents. We are showing them the results of what we have harvested. And know where to improve.

Yes! Kuwala Christian Girls School. Shine Girls Shine. We will all shine like the moon. **We are all diamonds and stars.**



**WE ARE DIAMOND AND STARS**

Form Two: Naomi - Author



# STUDENT PROFILE

## MEET STUDENT – MARTHA.



### In Martha's own words...

I am in Form 1. I am the firstborn and the last. My father is a teacher. Kuwala is the best school; there is a lot of security and hardworking teachers. I enjoy living at Kuwala because my friend and I do different activities like football and planting trees. I enjoy playing games, studying notes, reading novels, knitting and washing my clothes. Thank you for the opportunity for me to go to school. Thank you for praying for my family and me.

### CHALLENGES GIRLS FACE IN MALAWI.

In Malawi, girls face various challenges in Form One, including financial constraints that prevent them from accessing education, early marriages that force them to drop out of school, and cultural norms that prioritize boys' education over girls'. Additionally, inadequate sanitary facilities and a lack of access to menstrual hygiene products can lead to girls missing school, further hindering their educational progress.



# TEACHER PROFILE

## MEET TEACHER – MR. BRIGHT CHIKAFU

### In Mr. Chikafa's own words...

I went to Nalikule College of Education to study for a bachelor's degree in Education Sciences. At Kasungu Teachers College, I trained as a primary school teacher. I teach Mathematics, Biology and Agriculture.

The students and teachers are hardworking. The learners are growing spiritually and physically as they are involved in different sports activities and prayers. The most rewarding experience is that I have been trusted and included as one of the staff members to assist learners in achieving their goals. These students have a bright future.





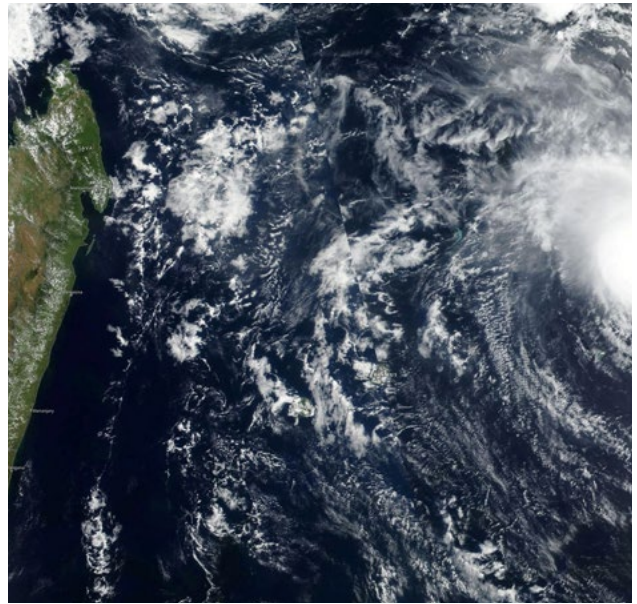
A portrait of a man with short dark hair and a beard, wearing a light blue button-down shirt. He is looking directly at the camera with a slight smile. The background is a blurred green foliage.

**THESE  
STUDENTS  
HAVE A  
BRIGHT  
FUTURE.**

---

**MR. CHIKAFA**

**”**



■ *Cyclone Freddy making landfall off the coast of Africa. 2023*

## IN THE NEWS.

**IT NOW APPEARS THAT  
CYCLONE FREDDY, WHICH  
STARTED IN FEBRUARY, IS  
THE LONGEST-EVER IN  
RECORDED HISTORY.**

The good news is Kuwala Christian Girls School avoided damage by engineering proper structures, and proper drainage strategies around the buildings; however, the bad news is other parts of the country have been severely impacted, with over 500 deaths reported. Extreme flooding, washed-out roads and power outages are a few direct impacts.

With a record-breaking cholera outbreak concurrently underway, Malawi faces several challenges. We are fortunate to have not only a well-constructed campus but also our own water supply, sewage system and soon, our own solar power equipment and biogas program. Nevertheless, cyclone Freddy appears to be another sign of the significant impact of climate change, specifically in Africa, and the need to carefully develop programs for climate resiliency.





## JOHANNESBURG

March 20 (Reuters)

**Cyclone Freddy** has killed more than 500 people in southern Africa since it first made landfall last month, making it one of the deadliest storms to hit the continent in the last two decades.



# ON THE GROUND IN THE AIR.

**KUWALA HAS ACQUIRED  
ADDITIONAL FARMLAND.**



■ Drone operator and photographer, Chimwemwe Katola - in the middle of the newly purchased land. Image inset shows new property looking back on the existing Campus property at the top left of the image. Kuwala\_2023.





## ACQUIRING LAND FOR KUWALA HAS SHORT AND LONG-TERM IMPORTANCE FOR THE CAMPUS AND THE COMMUNITY.

01

### Sustainability

**Rationale:** Promoting Sustainability: Malawi relies heavily on agriculture, and sustainable practices are critical for the country's economic and environmental well-being. Kuwala emphasizes sustainability and education so the next generation is a more sustainable future for the community.

02

### Community Outreach

**Rationale:** Many communities in Malawi have food security challenges. Kuwala is interested in creating a farm to help the community, improve the surrounding area's quality of life, and make the Campus less dependent on buying food.

03

### Economic Development

**Rationale:** Generating food crops directly benefits the community by creating jobs and promoting local businesses. Additionally, responsible agricultural practices that prioritize sustainability can attract environmentally conscious companies and investors to the area, promoting economic development.





## GROWING NEWS.

### CROPS AND PLANTS ARE EVERYWHERE.

The maize crop is a rich dark green and maturing; it will be ready to gather in the coming months. Beans have been harvested, dried and shelled. Pawpaws - **see front cover for image** - are growing in the orchard, and carrots are maturing in abundance—such a vibrant landscape at Kuwala. Martha - this month's featured student - takes an active interest in horticulture as seedlings are planted around the Campus.





# CONSTRUCTION.

## STAFF DUPLEXES.

Construction continues on the staff housing. This is a critical infrastructure, as Kuwala's Campus is remote and teachers have a hard time getting to work especially in the rainy season where the roads wash out.



■ This is the condition of the road to Kuwala when it rains. Housing teachers on-site is a top priority to reduce teacher turn-over. Kuwala\_2023.





# BIOGAS INSTALL.

**SOME PLANS WORK AS  
PLANNED BUT WEATHER  
PROVIDES NEW TIMELINES  
AS WE ADAPT.**

**The Biogas project is challenging with seasonal rains.** But, we know a thing or two about setbacks as an inevitable part of any construction project. We still estimate a return on investment to be about 12 months as we move away from purchased natural gas to run the commercial kitchen stoves to a more sustainable biogas.





■ Biogas excavation and foundation shown just behind St. Peter's Assembly Hall at the back of the kitchen. Kuwala\_2023.



■ Biogas excavation. Kuwala\_2023.

## BIOGAS BENEFITS TO THE CAMPUS, WHY IT'S IMPORTANT!

01

**Access to Clean Energy:** Many rural African communities lack access to reliable and affordable energy sources. By constructing a biogas project, communities can generate their clean energy from organic waste materials such as animal manure and agricultural residues. This can help reduce reliance on fossil fuels and traditional biomass, which can have negative environmental and health impacts.

02

**Improved Sanitation:** Biogas projects can also help improve sanitation in rural communities. By using animal manure and other organic waste materials to produce biogas, communities can reduce the amount of waste left untreated, leading to health hazards such as water contamination and the spread of disease. Additionally, biogas projects can produce a high-quality organic fertilizer that can be used to improve soil health and agricultural productivity.

03

**Economic Benefits:** Constructing a biogas project can also benefit African rural communities. The project can create jobs during the construction phase and provide ongoing employment opportunities for maintenance and operation. Additionally, communities can sell excess biogas or organic fertilizer to generate income, which can help improve their overall economic well-being. Overall, a biogas project can provide a sustainable and holistic solution to address energy, sanitation, and economic challenges in African rural communities.



## ARE YOU A MEMBER OF A SPORTS TEAM OR A CHURCH YOUTH GROUP?



Are you planning a golf tournament, or are you a Church congregation looking for an International Mission? Please consider Kuwala if you are planning an event. Becoming a partner in fundraising to support an all girl's school in Africa makes a measurable difference in the students' lives when there is no other option for education. We would be happy to have a discussion. Check out our website at [Kuwala.org](http://Kuwala.org) or connect with us at [info@kuwala.org](mailto:info@kuwala.org)

### KUWALA CHRISTIAN GIRLS SCHOOL

PO Box 23070  
McGillivray PO  
Winnipeg, Manitoba R3T 5S3

CRA Charitable Registration N° 800640062 RR001