

STORIES FROM THE FIELD

CRA Charitable Registration N° 800640062 RR001



KUWALA
Christian Girls School



**KUWALA
WELCOMES
CANADA TO
MALAWI** 

02 ↗

**Canada team in Malawi
arrive to flags!**

Kuwala students welcomed us with smiles, singing and laughter! The campus shows school pride...

03 ↗

**Tools for learning,
education in the trades.**

The Construction Team was also very excited to open an entire set of DeWalt® power tools, complete with battery packs...

05 ↗

**Thank you from the
Canadian board.**

Giving the gift of education is an enriching and fulfilling experience, both for the person giving it and for the person receiving it...

06 ↗

**Kuwala celebrated a
campus Dedication Day.**

A presentation by the Malawian Board, with students singing and leading the way to each campus building...



■ Memory Mdyetseni-Malawi board member holding the Canadian welcome flag with student. Kuwala_2022..

Delegates from the Canadian Team arrive in Malawi! It is a very Merry Christmas!

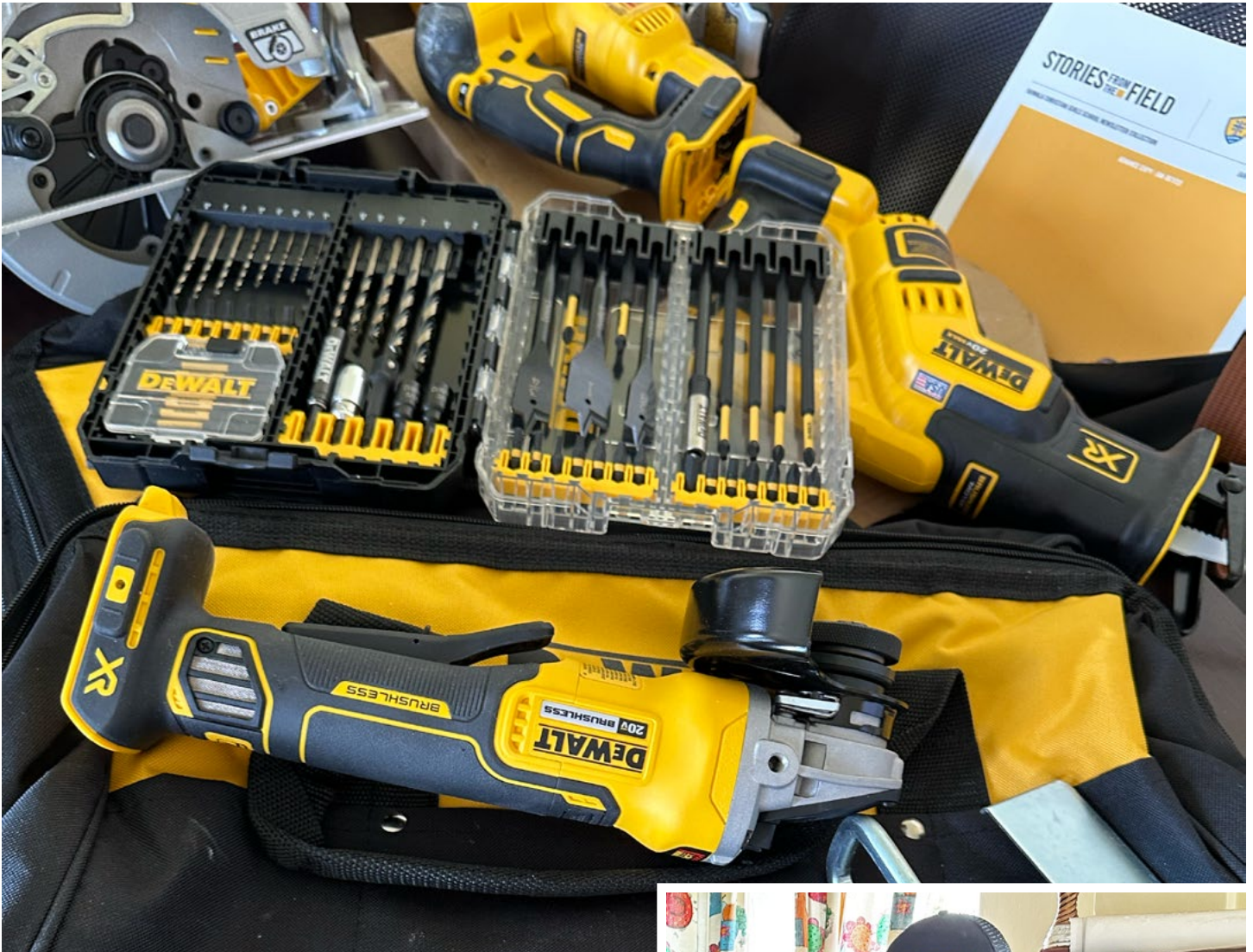
Kuwala students welcomed us with smiles, singing and laughter! The campus shows school pride and expresses that everyone cares about the place they work and learn every day. Construction is booming! It is the summer season in Malawi and temperatures soared in the 30s. Malawi eagerly awaits the rainy season in January, and villagers and crew on campus are preparing the field and gardens and planting in the greenhouse. Outside the campus, fields upon fields of corn, tobacco and crops of vegetables are slowly sprouting, looking for the moisture about to come. December is a very lean month; people are hungry, and food stores are low or non-existent. Families may go days without food, and rationing is standard. Our students at Kuwala are thankful and appreciative of the opportunity to go to school and be safe and healthy. They are working very hard to show us they do not take this opportunity for



■ Gifts and cheers from Canada for the holidays, Kuwala_2022.

granted. Staff and students opened suitcases of supplies on the soccer field. And happy and surprised, students eagerly unpacked games, activity and colouring books, skipping ropes, school supplies, Lego®, knitting needles and yarn, frisbees, basketball and volleyball nets! Essential teaching supplies, including chalk and motivational stickers, put smiles on teachers' faces.

Tools to build Education in the trades.



Tools for learning

The Construction Team was also very excited to open an entire set of DeWalt® power tools, complete with battery packs! Drills and bits, levels, measuring tapes, sander, planer, jigsaw, circular saw, and so much more! Working with power tools will be incredible, and Henry Mdyetseni, Kuwala's Chief Engineer consultant and Malawi board member confirmed that projects would become easier to complete. Teaching will begin with all the crew, and we are excited to see the enhancements this will have on the school projects and buildings.



■ A gift of tools for Kuwala Campus, Henry Mdyetseni sizing up the Canadian DeWalt® Tough in the North T-shirt. He will make good use of the tools... and the shirt!
Kuwala_2022.



■ Memory Mdyetseni-Malawi board member holding a candle light service to Silent Night. Kuwala_2022.

Silent night

Christmas is a popular holiday in Malawi, and people of many different religions, including Christians, Muslims, and those who follow traditional African religions. The holiday is often marked by decorating homes and public spaces with colourful lights and other decorations and exchanging gifts between friends and family members.

Despite the challenges many people in Malawi face, the holiday is often a time for joy and celebration. Many people in Malawi attend church services on Christmas Day and may participate in traditional Christmas carols and hymns. Christmas is also a time for people in Malawi to come together with their communities and celebrate with festive meals and gatherings.

The visit concluded with a Christmas celebration at St. Peter's Assembly Hall. Everyone opened their gifts to reveal a candle. Memory Mdyetseni's story continued with everyone lighting their candle, one by one, to show that everyone provides light to make the school shine. We ended with the singing of "Silent Night," surrounded by the glow of candlelight; it was beautiful! A fabulous dinner and singing topped off the perfect ending to a wonderful visit.



■ Jerry Roehr - Chair Mission Committee, St. Peter's Evangelical Lutheran Church. Kuwala_2022.



■ Dedication prayer for the new hostel buildings; Mark + Leslie Kinzel, Jerry Roehr and Memory Mdyetseni. Kuwala_2022.



■ Mark Kinzel, one of the founding members of Kuwala greets the students at the Campus, Kuwala_2022.

Thank you from the Canadian board member's delegation.

Giving the gift of education is an enriching and fulfilling experience, both for the person giving it and for the person receiving it. Giving can bring joy and happiness to others and an opportunity to show appreciation, love, and support. There are many different ways to offer, including providing gifts, money, or time, and each person has their unique style of giving and contributing to the success of Kuwala. Some of our donors prefer to provide monthly, while others prefer to make more significant contributions once or twice a year. Ultimately, giving is about finding a way to positively impact someone else's life, especially around Christmas Time. Blessings.

Our building continues; thank you for continuing to help us grow. Many projects are still looking for support, and more staff housing is on the horizon in the New Year.



■ Leslie Kinzel, one of the founding members fo Kuwala, with Grace Chazeza, a teacher at the Campus, Kuwala_2022.




■ Commercial grade construction quality showing the staff duplex No.2 under construction with the interior and exterior walls up to the roof level. Kuwala_2022.

Dedication day

Kuwala celebrated a campus Dedication Day which community and education leaders, surrounding school head teachers and pastors attended. A presentation by the Malawian Board, with students singing and leading the way to each campus building, could be heard from afar. The pastor provided a blessing and a dedication of the plaques displaying the name on the buildings.

Water tower



The water tower was built a few years ago and is a large, elevated reservoir that stores potable water for the Campus. It's located in a central location designed to provide a constant and reliable water supply for domestic use and irrigation. The tower is constructed of concrete, steel, and equipped with pumps, valves, and other systems to distribute the water throughout the Campus. It is just one example of the infrastructure initiative designed for the long-term sustainability of the Campus.



■ Alice's (featured centre-above) parents and brother (below) at their village. Kuwala_2022.

Village visit

The Canadian delegation visited the village and home of Alice, a student at Kuwala. We met her family and relatives; she showed us her home, a dirt hut with drapes hung in the openings to three small rooms; a kitchen with a small pot on rocks for cooking, storage, a small sleeping space with a mat on the floor, and the main room exposing a thatched roof that needed repair. The village welcomed us with open arms; we danced and exchanged blessings with each other. Kuwala supports the villages around the Campus with small care packages at Christmas.

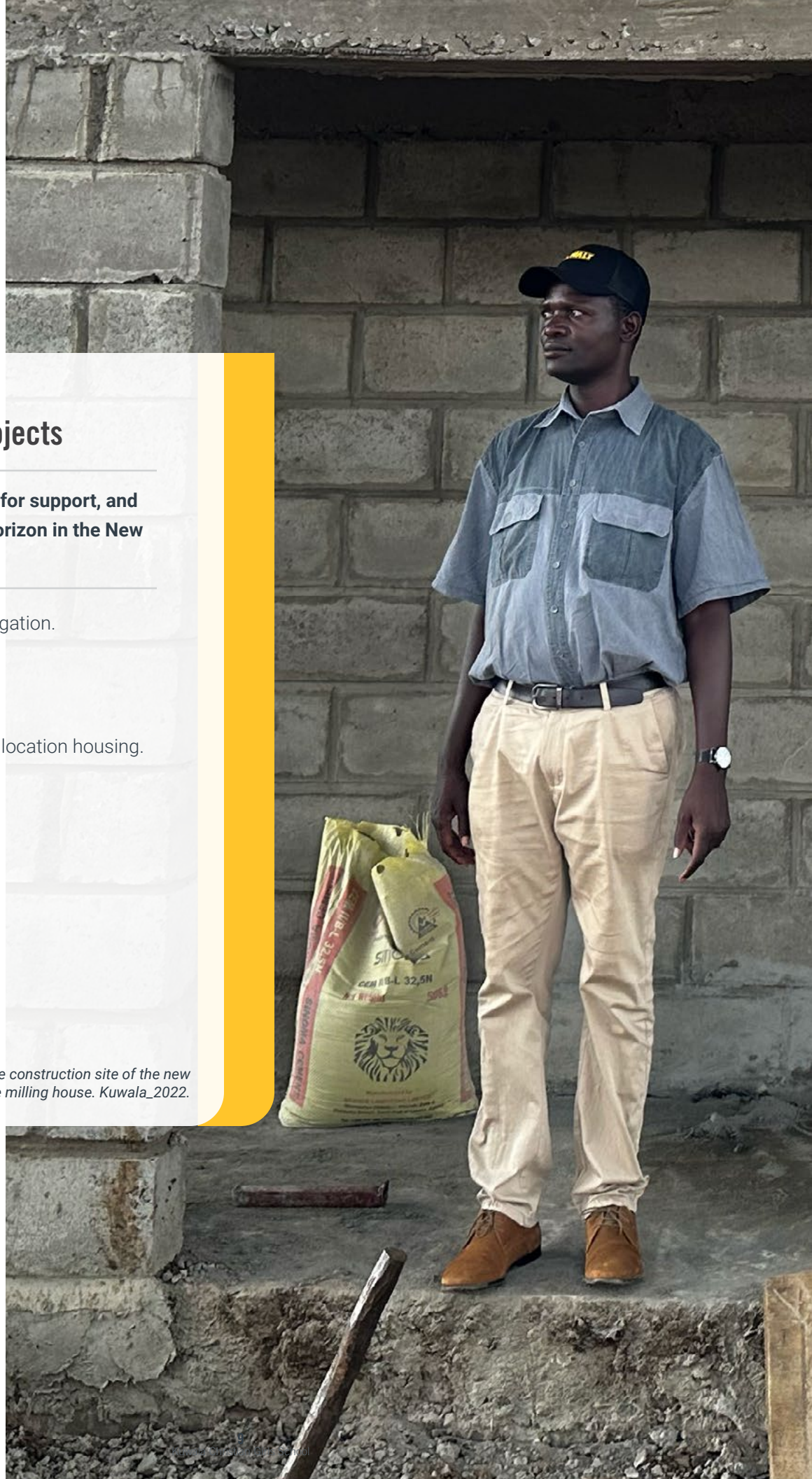


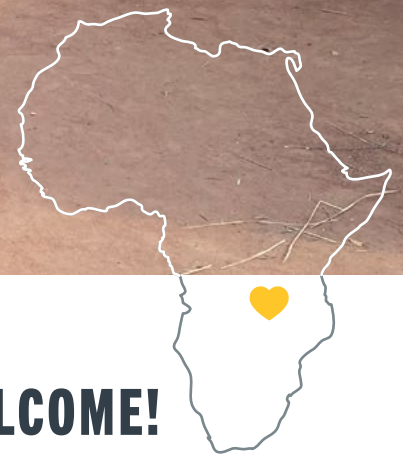
New and on-going projects

Many projects are still looking for support, and more staff housing is on the horizon in the New Year, this includes:

- Second water well for farm irrigation.
- Solar panel project to enhance the power on Campus.
- Solar hot water equipment for location housing.
- Science lab equipment.
- Library – well stocked.
- Computer lab and equipment.
- Medical clinic with equipment.
- More staff duplexes to keep our teachers on Campus.

■ *Henry Mdyetseni at the construction site of the new Maize milling house. Kuwala_2022.*





A VILLAGE WELCOME!

Malawi is often called the Warm Heart of Africa for a good reason: the kindness of its people, it has even been selected as one of the kindest countries to strangers in the world! This small landlocked country is one of the safest places in Africa and besides the welcoming Malawians, you will be astonished at how much such a small country has to offer!

Malawi, in Chichewa – the local language – means fire. It is named after the incredible sunset and sunrises over Lake Malawi. Lake Malawi is one of the main attractions of the country! The 3rd biggest lake in Africa world renowned for its crystal-clear waters but also because it displays the highest number of fish species of any lake in the world!





■ Mark Kinzel shaking hands with PTA Chair (Parent Teacher Association). Kuwala_2022.

KUWALA'S OFFICIAL WITH GOVERNMENT REPRESENTATIVES!



■ Members of the local clergy dedicated the buildings to the kingdom of God during the official opening ceremony. Kuwala_2022.



■ Mr. James Manyetera, Director at the Ministry of Defence, Lilongwe, Central Region, Malawi, left standing in readiness with Leslie Kinzel to Officially open Kuwala). Kuwala_2022.



**KUWALA STUDENTS
WALKING TO CHRISTMAS
CEREMONY AT ST. PETER'S
ASSEMBLY HALL.**

Building futures

Becoming more sustainable



■ Mark Kinzel, far right is looking over plans with Henry Mdyetseni (middle) and Innocent Mpasula (right), Kuwala's Farm Supervisor for the new farm location. Kuwala_2022.



Next year, we are building Biogas capability as our renewable energy source initiative produced by the anaerobic digestion of organic matter, such as agricultural waste, food waste, and animal manure. Biogas is typically composed of methane and carbon dioxide and can be used as a substitute for fossil fuels in a variety of applications, including replacing our propane dependency for cooking with a return on investment in about 12 months.

Kuwala is also developing an organic farm in order to improve our sustainability and improve our food security at the Campus.

■ Left: Future site of the biogas installation. Kuwala_2022.

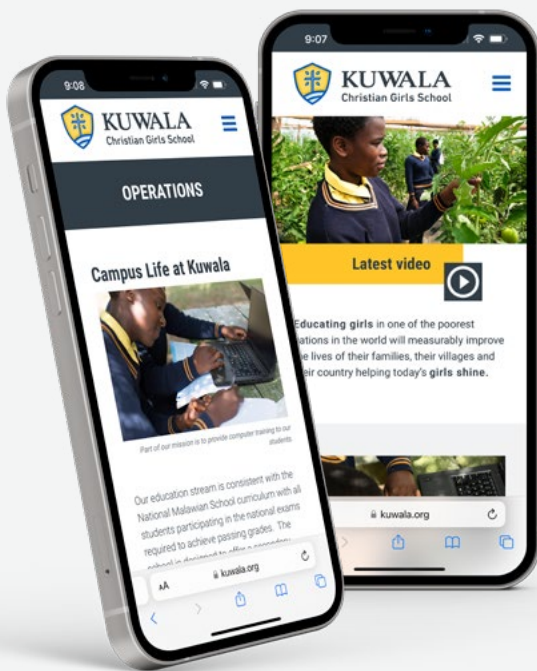


Merry
Christmas



■ Student made, friendship bracelets. Kuwala_2022.

Would you consider adopting **Kuwala** as your **international outreach** charity?



Are you a member of a sports team or a church youth group?

Are you planning a golf tournament, or are you a Church congregation looking for an International Mission? Please consider Kuwala if you are planning an event. Becoming a partner in fundraising to support an all girl's school in Africa makes a measurable difference in the students' lives when there is no other option for education.

We would be happy to have a discussion. Check out our website at Kuwala.org or connect with us at info@kuwala.org

To help with our fundraising Kuwala has a website with a call to action for donations using Canada Helps.



KUWALA
Christian Girls School



PO Box 23070
McGillivray PO
Winnipeg, Manitoba R3T 5S3

CRA Charitable Registration N° 800640062 RR001