



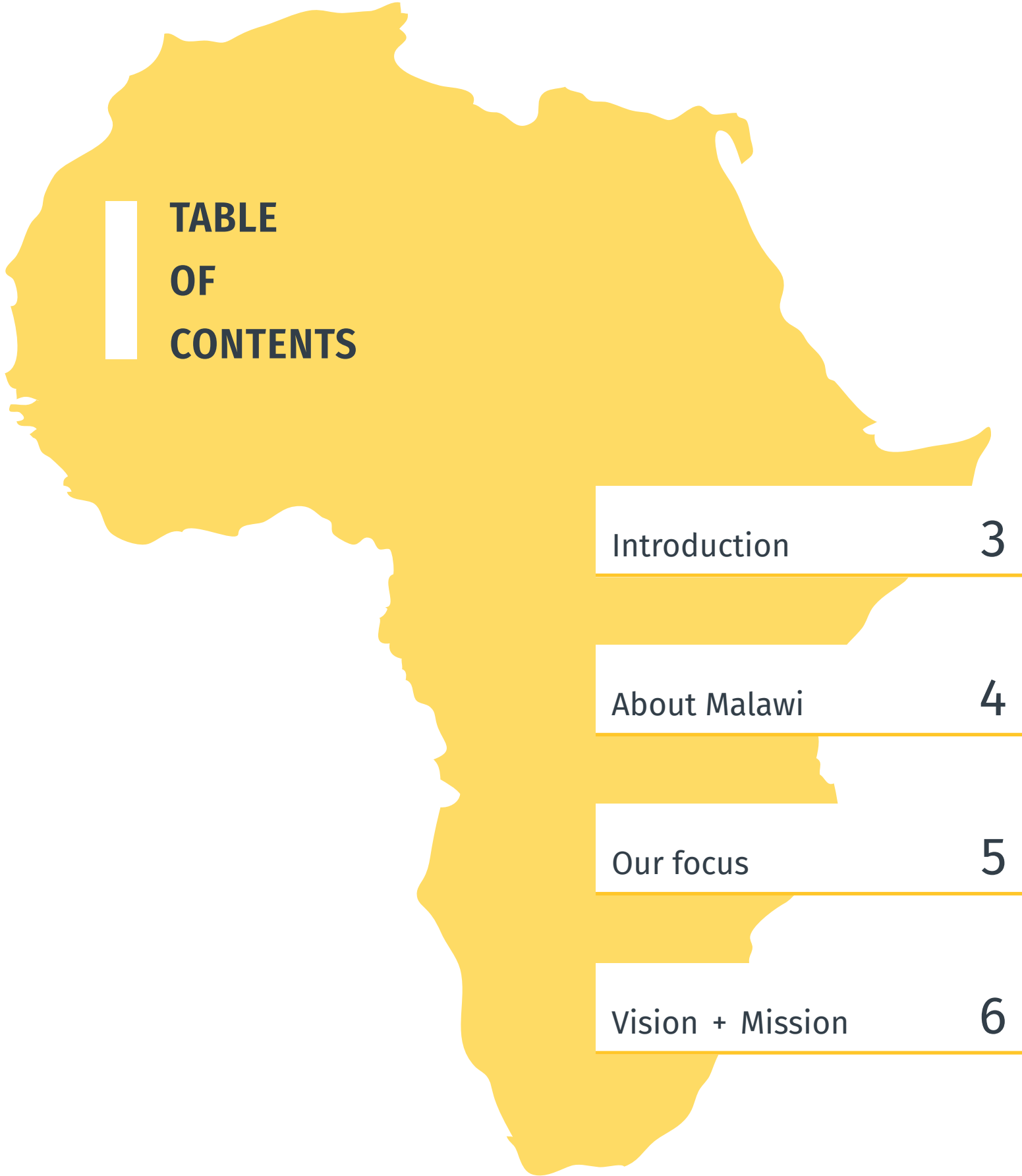
KUWALA
Christian Girls School

ANNUAL REPORT 2019

DVH_20_031

SHINE GIRLS SHINE

Canada Revenue Agency Charitable Registration Number: **#800640062 RR001**



Introduction	3
About Malawi	4
Our focus	5
Vision + Mission	6

What we do	7
Growth plans	10
Student profiles	13
Headmaster	16

Financials	17
INDEPENDENT 3RD PARTY AUDITED FINANCIAL REPORT AVAILABLE UPON REQUEST.	
Testimonials	19
Fundraising	21
Campus map	22
Contact us	23



2019 FROM OUR LEADERSHIP TEAM



OUR PROGRAM

Our program of **carefully selecting girls** with **little opportunity** for an education to move into a professional, safe environment where they **live in a modern dormitory** and are **educated** with dedicated staff is truly **life changing**.

OUR PROGRESS

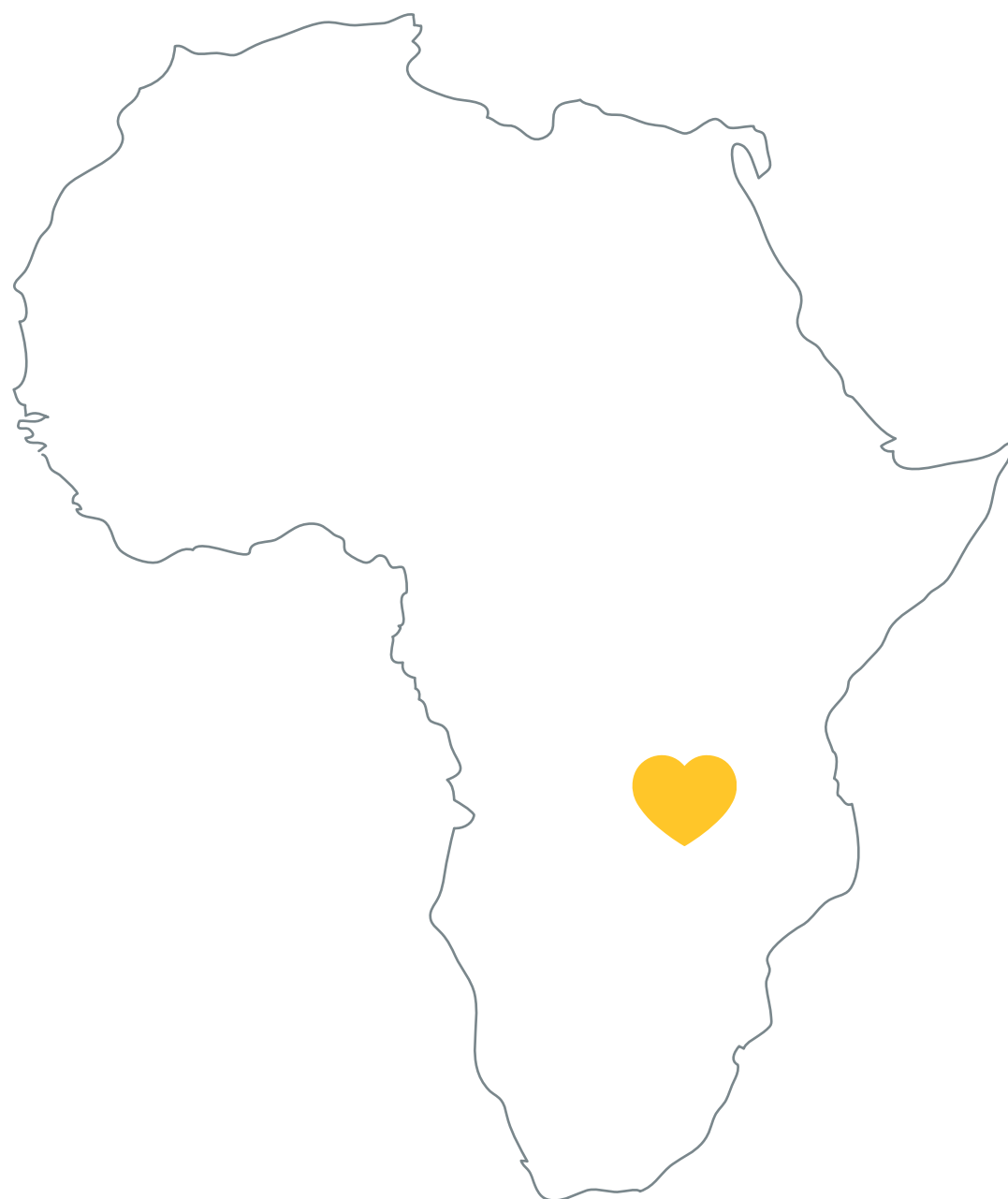
From our first trip to Malawi in **2015** and beginning with our **land purchase** and initial building projects in January of 2018, KCGS (Kuwala Christian Girls School) has moved energetically and rapidly forward. The amount of progress has surpassed expectations with both our **Canadian Board** and our **Malawian Board** members showing outstanding commitment to our program.

OUR PLANS

Working in one of the **world's poorest countries** over the past year we have had significant progress on several fronts. This has included a dramatic **expansion** of our **campus** with multiple capital projects both completed and under way as well as continued growth of our dedicated staff. Of the greatest importance has been the **ongoing education** and personal **development of young women** whom without KCGS would be left out of the opportunity's education will provide to them and by extension to their families and villages.



ABOUT MALAWI



Known as the warm heart of Africa, Malawi is located in south central Africa with the majority of the population being subsistence farmers growing maize for food on small plots of land in Malawi.

One of the most **Christian dominant** communities in Africa, Malawi is also one of the poorest with **50% of the population living below the poverty line** and 70% living on less than \$1.25 per day. **48% of the population is under age 14** with 10 million children under age 20.





WHY THE FOCUS ON GIRLS?



THE CHALLENGE

Girls in Malawi suffer disproportionately. Young girls face poverty, gender bias, starvation and child marriage. When girls attend school, they delay marriage and children by several years. Girls not in school typically marry early - often as young as 13 and begin having children.



THE VALUE OF KUWALA

Staying at the campus through high school gives girls **more choices** and **empowers** them to **break the poverty cycle**.



VISION

MISSION

VISION

To empower Malawian girls through a Christian-based, meaningful education, to equip them for success and strengthen their communities for present and future generations.

MISSION

Kuwala Christian Girls School is an accredited high school that operates within a biblically based learning community. A school where girls receive a quality education, become independent thinkers, discerning decision-makers, and change agents in their communities locally and globally, as faithful followers of Christ.



WHAT WE DO

Kuwala Christian Girls School provides a God-honoring educational experience and living environment for girls from Form 1 through 4 (Grades 9 to 12) in rural Malawi, Africa. Kuwala strives for excellence in academics, athletics and building life skills that supports transformative growth for girls to change their world. Kuwala faculty and staff comprise over 20 dedicated men and women who serve God as Christian educators and support staff who are inspired and guided by Kuwala's mission, vision and values statements. We currently have 60 girls enrolled.

Message from Memory Mdyetseni, Malawian Board Director - Watch video



BUILDING FUTURES

We are always looking for partners to help us change the lives of girls through education helping them change the lives of their families and their communities. There is a plan to continue developing the campus. To give teenage girls a better learning environment, we made Kuwala a boarding school. A safe environment is a requirement for learning and participation in a community with other girls, teachers, and support staff. To continue with work we are planning for the future and building the infrastructure today.

Message from Henry Mdyetseni, Malawian Board Director - Watch Video



Message from Kuwala student — Watch video

CHANGING FUTURES



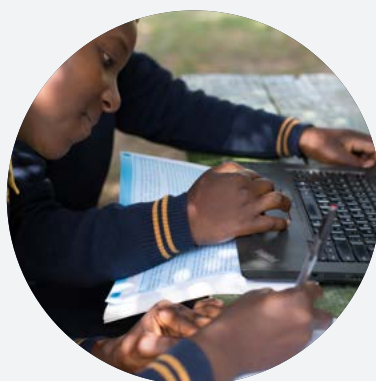
Mother's message: It is my wish that my daughter continue her studies at Kuwala. My daughter is safe from the barriers that many other girls in this area face in education. In addition, the school is a Christian one , and I have witnessed my daughter growing spiritually as well.



2019 GROWTH

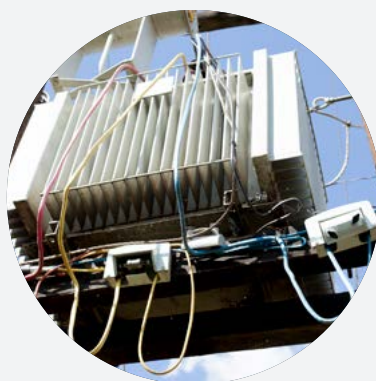


St. Peter's Assembly Hall. It will house the kitchen, food prep area, storage, washrooms, and seating for over 200 people.



Computers. 50 donated laptops will fundamentally change the school, the lives of the students and staff.

[WATCH VIDEO](#)



Connecting to the Power Grid. Malawi has one of the highest “energy poverty” rates in the world. The school now has both hydroelectricity and on-site solar.



Clinic. The school has hired a nurse who is helping the girls with healthy talks and treatments.

Teachers House. This beautiful structure will allow for a staff member and their family to live right on campus. House is almost complete and finalizing utility connections. This provides better access to community support for the girls.

Greenhouse. The girls will learn about planting and tending to the rows and rows and rows of fresh green produce!

Security of the school is a very important. A new fence and main gate keep students and staff safe while providing a secure facility for storing of building supplies and materials.



[WATCH VIDEO](#)



OUR FUTURE PLANS

01

Build a second dormitory.

02

Build a second staff house.*

03

Introduce a soccer field and a basketball court.

04

Move to our next step with computer networking.

While Malawi works through the challenges of **COVID-19** we continue to focus on expanding our school.

* Funding for project has been secured for 2020-21 construction.





STUDENT PROFILE

MERVIS HAPPY

Mervis is the eldest daughter in a family of five. She was born to parents who are small scale farmers growing crops like maize and groundnuts as well as keeping goats, chickens and cattle. Early primary school was easy for Mervis with no worries about school fees and it wasn't until she was ready for secondary school that the family realized they might not be able to afford the fees at the community day secondary school. School for girls was not a priority. There was no hope and little encouragement for a future that involved furthering her education.

After the Primary School Leaving Certificate Exams, Mervis feels that her guardian angel appeared just in time to give her the opportunity to attend Kuwala Christian Girls school. The rumors of free school in exchange for contributing some maize and beans was true. Mervis took the entrance exams and just when she was about to give up on Kuwala she got the scholarship. This was cause for celebration with her family.

Mervis sees a bright future with the goal of becoming a nurse. Mervis reads and writes in English, prays like a disciple every day and most importantly, she has developed plans for her life. Mervis now has hope; she is empowered.





STUDENT PROFILE

KHUMBO HARA

Khumbo went to live with her grandparents when she was eighteen months old after her father abandoned her before birth. Her family depends on agriculture, growing maize and groundnuts.

Khumbo attended primary school but had no vision as to what she might do next. Life as a 13 year old was difficult. She hoped to attend a community secondary school close to her home, but it was not a safe place to be and the teen pregnancy rate is high. Although this secondary school was the only one they could afford her family did not want her to attend. Khumbo could not see a future for herself.

When Khumbo heard about Kuwala Christian Girls School she was interested because she believed that life at a Christian school was going to offer so much more than life at a community school. She wrote the entrance exams and was accepted. Khumbo feels that her objective to be different from her peers has been met by grace and she now lives a happier life by Christian values. Kuwala has brought hope into her life and she has a dream that can come true. She says, “I see university corridors every time I’m studying and anticipate becoming a nurse one day.”





STUDENT PROFILE

MERVIS SIKELO

I am Mervis Sikelo born in 2006. I come from Likanga village just 400m from Kuwala. I live with my paternal uncle and his wife. My father is a primary school teacher. The family I live with grows maize ground nuts and sometimes tobacco. Being a girl whose most friends are teenage mothers and wives, going to school was hard during my primary school time. Despite challenges eventually I managed to sit for my Primary School Leaving Certificate.

Sometime in 2017 I heard that the school whose structure was only at foundation level right in my village was going to open the following year. This school still went on to invite girls for entrance exams which I was given an opportunity to sit for. I passed and got a scholarship to study for free for four years. Kuwala changed my future completely by making a way where there seemed to be none.

I can now speak English; my family now sees a new future for me. Being a part of the Kuwala student body makes my parents proud. My destiny is bright and most importantly, Kuwala has taught me the love for others.





ACTING HEADMASTER

MCSENSIO RAPHAEL (MAX)



BIOGRAPHY. McSensio Raphael a Malawian born in 1988. His parents were illiterate, and they did farming in which they grew corn and kept some livestock. In 1993 the family moved to Mchinji district centre where his parents started some sort of vending. In the year 2000 his mother died and left 4 children. He went to stay with his maternal aunt. The more McSensio insisted to go to school the harder life became. McSensio had written his grade 8 national exams in 2004 but there was no hope for him to proceed to secondary school. A week before schools opened Max met Sonia Lewysca a daughter of a Ukrainian writer who was in Malawi for contract from University College of London. Max told her his story and she provided him with funding to attend Mchinji Secondary School after which he went to Natural Resources College where he obtained his Agricultural Diploma in 2011. During this program Max worked at a livestock farm as a student and developed skills in management. In 2012 McSensio became a secondary school teacher where he taught biology. In 2014 Max went to Mzuzu University and completed a degree program. In 2017 he joined an international NGO where he signed a 2 year contract as Monitoring and Evaluation Officer. After one year of his contract he was offered a job at Kuwala Christian Girls school. He does story telling sessions at Kuwala for his students.

EXPERTISE. McSensio Raphael holds a BSc degree in Forestry and Environmental Management and a diploma in Agriculture and Natural Resources Management. Raphael is a highly competent and versatile individual who is married with three children. He has a positive, enthusiastic approach to work and is motivated by results.



KUWALA

TEACHING & SUPPORT STAFF



Doreen
Benson



Gabriel
Banda



Grace
Chazeza



Nancy
Nkhoma



Noel
Maganga



Owen
Mdindo



Nurse: Letia Kampaliro



2019

FINANCIAL

DESCRIPTION	\$CND FUNDS
Total support and revenue	384,892
School operating expenses	211,970
School construction	159,670
Management and general expenses	17,223
Fundraising expenses	1,348
Total expenses	390,211
Total assets	26,165
Total liabilities	5,672
Net asset balance	20,165

All numbers are from 2019 Audited statements.

We have been approved by **CAF Canada** which means that **US donors can donate** to CAF America as a donor advised fund (i.e. designate that the funds go to Kuwala). By donating to CAF America they get a **tax receipt**. CAF America forwards the donation to CAF Canada which passes it on to us.

[LINK TO CAF WEBPAGE](#)

96%

of our funding
went directly
to our school
in Malawi.

INDEPENDENT 3RD PARTY AUDITED FINANCIAL
REPORT AVAILABLE, [CLICK HERE](#)



OUR SUPPORTERS TESTIMONIALS

01



We feel honored and blessed to be able to support Kuwala Christian Girls School. We have so much to be thankful for and wanted to be able to share a part of that with others who don't even have the basics that we often take for granted. Our decision to donate funds to Kuwala in memory of precious family members that are no longer in our lives, was made as a way to keep alive and to spread the faith, joy, love, and hope for the future that we received from them in our lives. When humankind says, "can we do it," or "is it even enough to matter?" Is when God says "I can and will do FAR more with anything you give, than you can ever imagine!" And that's where this school and these girls are headed with the support, prayers, and hope from all our helping hands.

In gratefulness to our Lord and Savior,
Susan Kenny Siemens and Norm Siemens

02



St. Peter's Evangelical Lutheran Church, Winnipeg, Manitoba, Canada

Our congregation was invited to provide the funding for the Kuwala Kitchen/Assembly Hall and have since also approved underwriting the construction cost for a second teacher's residence. In addition, we facilitated 15 individual student sponsorships which requires a four year cancellation notice if it is to be suspended. We are blessed to be able to support a project that breaks the cycle of teen age marriages and pregnancies and enables girls to enter the academic world or to be entrepreneurs in their own community.

Jerry Roehr



OUR SUPPORTERS TESTIMONIALS

03



Kuwala Girls School is a project we feel honoured to support. It provided Christian education, security, training and hope for girls who would otherwise face a harsh and uncertain future.

In a framework of Christian love and guidance. Kuwala equips girls to rise above the cycle of poverty and bring hope to their families and villages.

Elsa Wolf & Klaus Wolf

04



We have been honored to have been able to sponsor Sphiwe to attend the Kuwala girls school in Malawi for the past two years. We look forward to receiving her letters with news about how much she is enjoying school and growing in her Christian faith. God willing, we hope we can continue to sponsor Sphiwe and see her graduate from Grade XII and go on to further education opportunities.

Bev Wagner & Merv Wagner



FUNDRAISING PROGRAM

01 | Student Profiles

We have many individuals who provide \$1200 annually to support one of our students living and education needs.

02 | Private Donors

We have individuals as well as a private and public foundation who have provided support for both operating and capital expenditures.

We have been approved by **CAF Canada** which means that **US donors** can donate and get a tax receipt.

[LINK TO CAF WEBPAGE](#)

03 | Organizational Support

We have congregations who support both student scholarships as well as capital projects.

04 | On-line Campaign

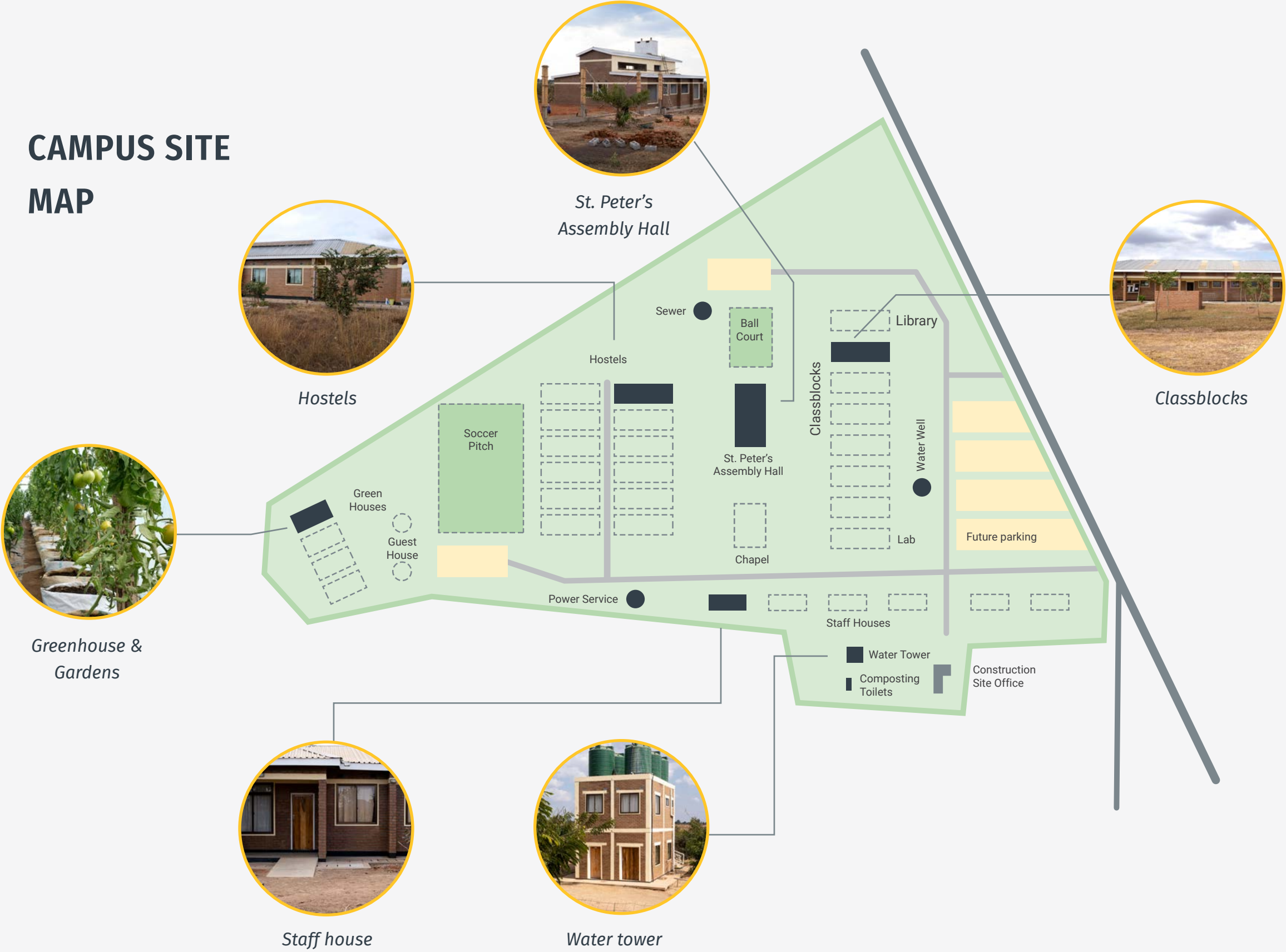
In 2020 with our new website we will be expanding a virtual campaign to share our story and expand our supporter base.

- Digital studio in Malawi
- Integrated Newsletters to website.
- Google AdWords





CAMPUS SITE MAP



KUWALA CAMPUS BUILDINGS	
000 - 099	Campus Infrastructure
100 - 199	Classblocks
200 - 299	Hostels
300 - 399	Staff houses
400 - 499	Greenhouses
500 - 599	Campus life



CONTACT US WE ARE HERE TO HELP

Canadian Board of Directors

Mark Kinzel, President & Chair

Myles Boonstra, Vice President & Vice-Chair

Susan Wiegner, Treasurer

Donalea Remillard, Secretary

Darryl van Herksen, Director

Bob Granke, Director

Ruth Hessmann, Director

Megan Roberts, Director

Mark.kinzel.kuwala@gmail.com

myles.boonstra.kuwala@gmail.com

susan.wiegner.kuwala@gmail.com

donalea.remillard.kuwala@gmail.com

darryl.vanherksen.kuwala@gmail.com

robert.granke.kuwala@gmail.com

ruth.hessmann.kuwala@gmail.com

megan.roberts.kuwala@gmail.com

Malawian Board of Directors

Esther Kawale

Loyce Chilimsungwi

Henry Mdyetseni

McLuwen Kachipanda

Memory Mdyetseni





APPENDIX OF WEBLINKS

Program Definition

Message from Memory Mdyetseni, Malawian Board Director

Message from Henry Mdyetseni, Malawian Board Director

Message from Kuwala student

Kuwala Employee Handbook

CAF Canada approved US donors for tax receipt

Indepndent 3rd party audited financial report



Kuwala Christian Girls School has developed several communication channels to keep you informed about current activities and development progress.

- Newsletter
- Email - info@kuwala.org
- Website - www.kuwala.org
- Social Media (Facebook, Instagram, Youtube)

Canada Revenue Agency Charitable Registration Number:
#800640062 RR001